

L2X
MIKRO

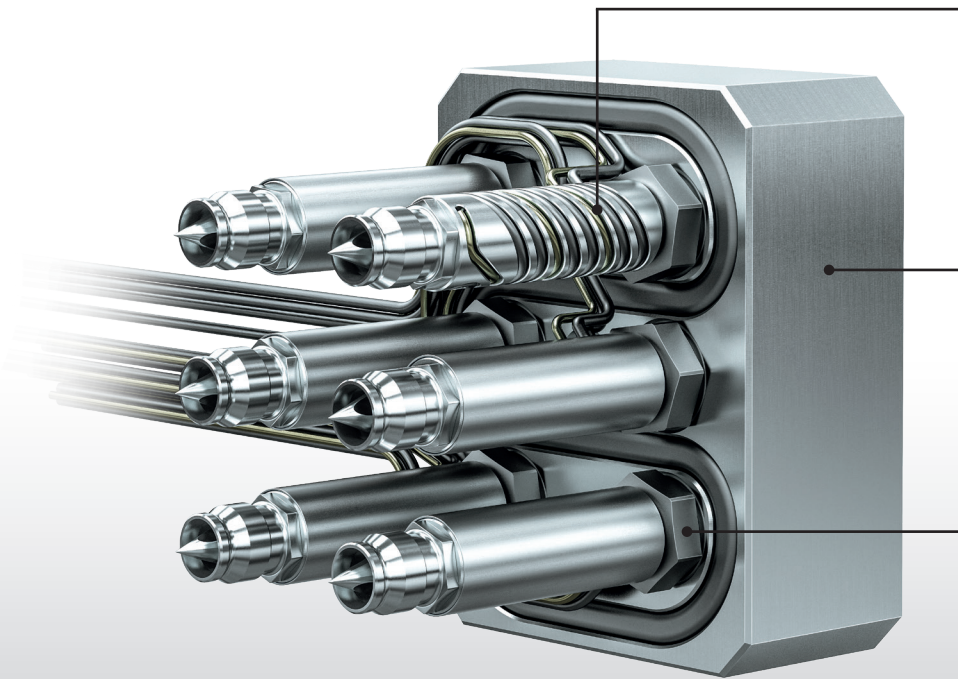
High performance hot runner system
for small injection moulding machines

Direct nozzle heating for more process reliability.

EWIKON

For technical resins and standard materials.

L2X MIKRO The solution for small parts from 0.05 gram



■ Powerful

Direct nozzle heating for high thermal performance. Process-reliable processing of technical resins.

■ Extremely compact

Manifold dimensions only 61 x 48 mm. Suitable for all small injection moulding machines including Babyplast®.

■ Leakproof

Leakproof screw connection between nozzles and manifold - simple drop-in installation.

Product features + Benefits

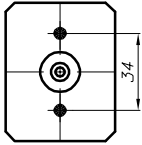
- Powerful direct heating of nozzles by compact coil heater with thermocouple
- Nozzle diameter 10 mm, flow channel diameter 3 mm
- High thermal performance. Very stable heating with minimized loss for even temperature profile along the whole length of the nozzle and improved heat input in the gate area. Process-reliable processing of technical resins
- Leakproof screw connection between nozzles and manifold - simple drop-in installation
- Minimized required installation space due to L2X screw connecting technology for precise positioning of the connecting cables
- Extremely compact system dimensions - suitable for all small injection moulding machines including Babyplast®
- Short total flow path lengths, only small melt volume needs to be exchanged. Problem-free processing of thermally sensitive materials



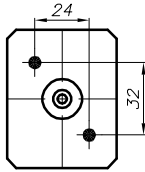
Versions

Available nozzle layouts

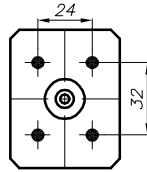
2-drop
axially parallel



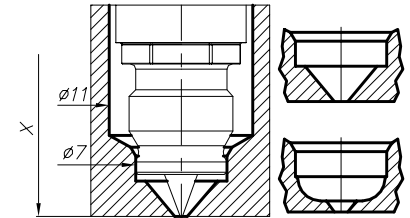
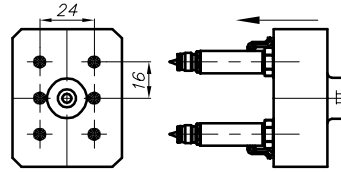
2-drop
diagonal



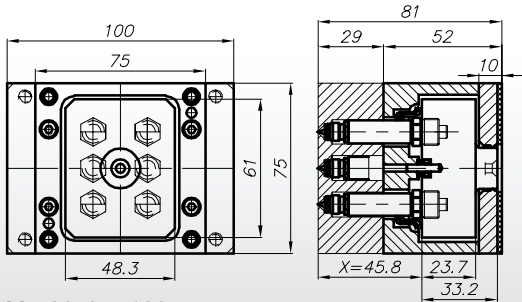
4-drop



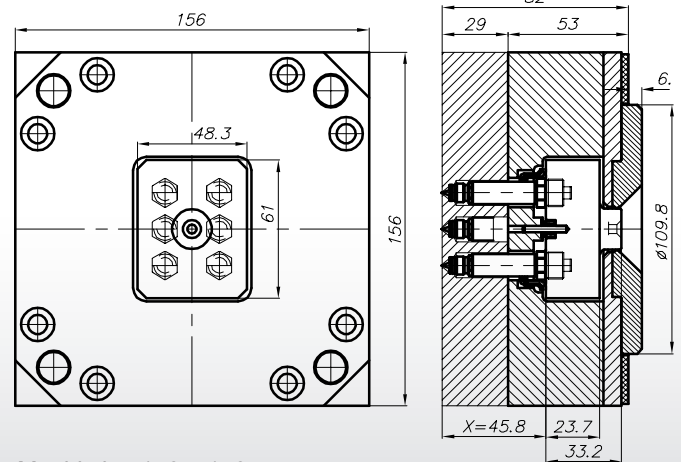
6-drop



Available as ready-to-install unit
(manifold with pre-installed nozzles)
or as hot half in two standardized sizes:



Mould size 100 x 75 mm
e.g. for Babyplast® injection moulding machines



Mould size 156 x 156 mm
e.g. for BOY® injection moulding machines

z155

Item numbers

Nozzle layout	Hot half 156 x 156 mm	Hot half 100 x 75 mm	Manifold with pre-installed nozzles
2-drop axially parallel	HM2031	HM1031	22600-31
2-drop diagonal	HM2032	HM1032	22600-32
4-drop	HM2033	HM1033	22600-33
6-drop	HM2034	HM1034	22600-34

EWIKON
Heißkanalsysteme GmbH
Siegener Straße 35
35066 Frankenberg
Tel: +49 6451 501-0
Fax: +49 6451 501-202
E-Mail: info@ewikon.com
www.ewikon.com

Your EWIKON partner: