

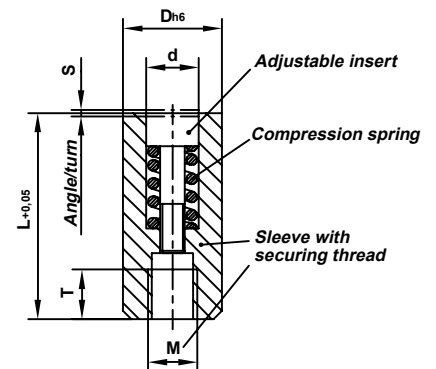
DATI 1000

Identification stamp with fast-change system $\varnothing 3 - 16$ mm with height adjustment

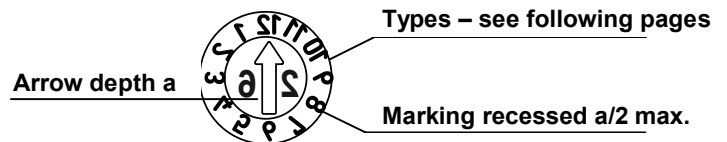
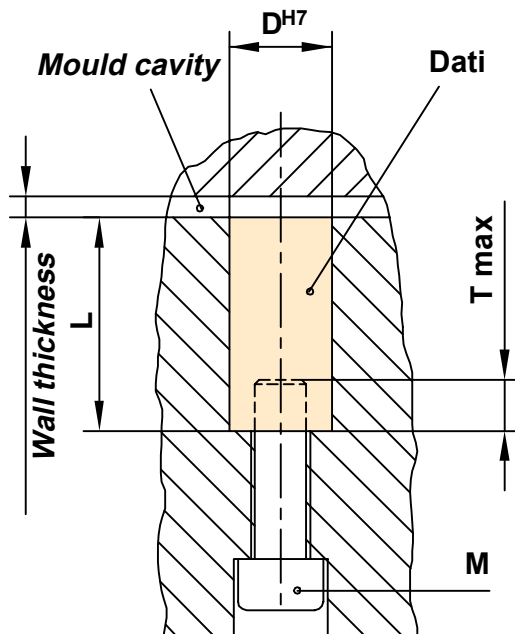


DATI®-DESCRIPTION

- Sleeve with identifier
- Adjustable insert with an indicator arrow.
The recessed indicator arrow is used as a screw slot for adjustment and to change the insert
- Fastening thread
- Compression spring for the infinite locking of the adjustable insert
- Material for sleeve and adjustable insert:
1.4034, hardened HRC 56 ± 2 stainless
- Inscription: laterally reversed



Installation



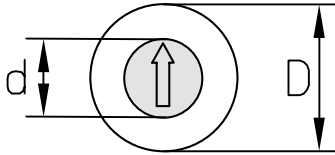
Dimension table in mm						
D	d	L	M	T	a	S
3	1,6	14	2	3	0,20	0,25
4	2,5	14	2	3	0,30	0,20
5	3,1	17	3	3	0,40	0,20
6	3,1	17	3	3	0,40	0,20
8	4,6	20	4	4	0,40	0,35
10	4,6	20	5	4	0,40	0,35
12	6,4	25	6	6	0,60	0,50
16	6,4	25	8	8	0,60	0,60

FAST CHANGING SYSTEM

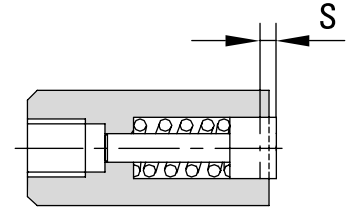
			<p>At the end of each year, the adjustable insert with year is changed in a matter of seconds by removing and screwing it in.</p> <ul style="list-style-type: none"> - Stop production, open mould - Change adjustable insert, set date - Continue production - Check setting on moulded part
<p>To screw in adjustable insert:</p> <ul style="list-style-type: none"> • Turn clockwise • Adjust height according to visual estimate 	<p>To turn adjustable insert:</p> <ul style="list-style-type: none"> • Turn clockwise or counter-clockwise • Check height adjustment 	<p>To change adjustable insert:</p> <ul style="list-style-type: none"> • Turn continuously counter-clockwise • The adjustable insert will raise • Remove adjustable insert 	

DATI 1000

Identification stamp with fast-change system Ø 3 – 16 mm
with height adjustment



Dimension table in mm									
D	3	4	5	6	8	10	12	16	mm
d	1,6	2,5	3,1	3,1	4,6	4,6	6,4	8,4	mm

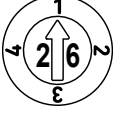






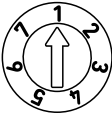

Type	A	B	C	CC
Indicator				
Indicator	Months + year (e.g. dec. 26)	Months (e.g. dec.) connected with type C (displays e.g. dec. 26)	Year + 5 years connected with type B (displays e.g. dec. 26)	Year + 11 years connected with type B (displays e.g. dec. 26)
D	Order no.	Order no.	Order no.	Order no.
3	A/3/Jahr(Year)	B/3/00	C/3/Jahr(Year)+5	CC/3/Jahr(Year)+11
4	A/4/Jahr(Year)	B/4/00	C/4/Jahr(Year)+5	CC/4/Jahr(Year)+11
5	A/5/Jahr(Year)	B/5/00	C/5/Jahr(Year)+5	CC/5/Jahr(Year)+11
6	A/6/Jahr(Year)	B/6/00	C/6/Jahr(Year)+5	CC/6/Jahr(Year)+11
8	A/8/Jahr(Year)	B/8/00	C/8/Jahr(Year)+5	CC/8/Jahr(Year)+11
10	A/10/Jahr(Year)	B/10/00	C/10/Jahr(Year)+5	CC/10/Jahr(Year)+11
12	A/12/Jahr(Year)	B/12/00	C/12/Jahr(Year)+5	CC/12/Jahr(Year)+11
16	A/16/Jahr(Year)	B/16/00	C/16/Jahr(Year)+5	CC/16/Jahr(Year)+11

Type	D + E	H + I	L + E	J
Indicator				
Indicator	Week + year (e.g. the combination of the numbers 30 and 5 results in 30 + 5: calendar week 35/26)	Days (e.g. 20 + 9 = 29) connected with type A (displays e.g. 29. dec. 26)	Days + month + year (e.g. 25. may 26)	Shift numbers (e.g. 2nd shift)
D	Order no.	Order no.	Order no.	Order no.
3	D+E/3/Jahr(Year)	H+I/3/00	L+E/3/Jahr(Year)	J/3/00
4	D+E/4/Jahr(Year)	H+I/4/00	L+E/4/Jahr(Year)	J/4/00
5	D+E/5/Jahr(Year)	H+I/5/00	L+E/5/Jahr(Year)	J/5/00
6	D+E/6/Jahr(Year)	H+I/6/00	L+E/6/Jahr(Year)	J/6/00
8	D+E/8/Jahr(Year)	H+I/8/00	L+E/8/Jahr(Year)	J/8/00
10	D+E/10/Jahr(Year)	H+I/10/00	L+E/10/Jahr(Year)	J/10/00
12	D+E/12/Jahr(Year)	H+I/12/00	L+E/12/Jahr(Year)	J/12/00
16	D+E/16/Jahr(Year)	H+I/16/00	L+E/16/Jahr(Year)	J/16/00

DATI 1000

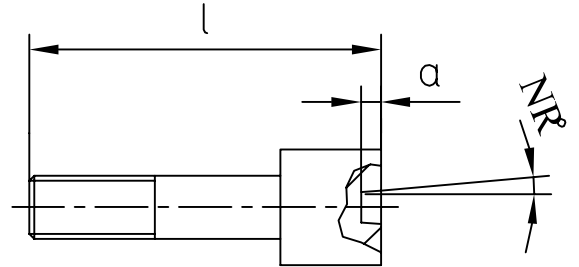
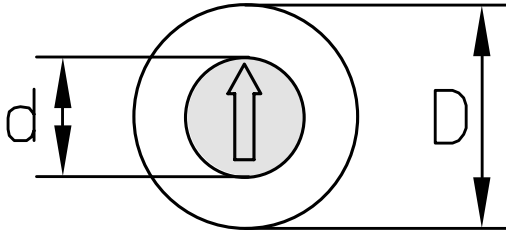
Identification stamp with fast-change system Ø 3 – 16 mm
with height adjustment

Type	K	M	N	R
Indicator				
Indicator	Quarter + year (e.g. 1st quarter 26)	Identifier letters A – M (type M)	Identifier letters N – Z (type N)	Identification according to customers preference e.g. material identification
D	Order no.	Order no.	Order no.	Order no.
3	K/3/Jahr(Year)	M/3/00	N/3/00	R/3/Zeichen(Symbol)
4	K/4/Jahr(Year)	M/4/00	N/4/00	R/4/Zeichen(Symbol)
5	K/5/Jahr(Year)	M/5/00	N/5/00	R/5/Zeichen(Symbol)
6	K/6/Jahr(Year)	M/6/00	N/6/00	R/6/Zeichen(Symbol)
8	K/8/Jahr(Year)	M/8/00	N/8/00	R/8/Zeichen(Symbol)
10	K/10/Jahr(Year)	M/10/00	N/10/00	R/10/Zeichen(Symbol)
12	K/12/Jahr(Year)	M/12/00	N/12/00	R/12/Zeichen(Symbol)
16	K/16/Jahr(Year)	M/16/00	N/16/00	R/16/Zeichen(Symbol)

Type	T	WT	Z
Indicator			
Indicator	Days 1 – 31	Weekdays 1 – 7	without markings
D	Order no.	Order no.	Order no.
3	T/3/00	WT/3/00	Z/3/00
4	T/4/00	WT/4/00	Z/4/00
5	T/5/00	WT/5/00	Z/5/00
6	T/6/00	WT/6/00	Z/6/00
8	T/8/00	WT/8/00	Z/8/00
10	T/10/00	WT/10/00	Z/10/00
12	T/12/00	WT/12/00	Z/12/00
16	T/16/00	WT/16/00	Z/16/00

DATI 1000

Adjustable inserts for DATI 1000 / 1200 / 2000 / 2100 / 2200



Dimension table in mm									
D	3	4	5	6	8	10	12	16	mm
d	1,6	2,5	3,1	3,1	4,6	4,6	6,4	8,4	mm
l	9	10,5	13	13	14	14	17	23	mm
a	0,20	0,30	0,40	0,40	0,40	0,40	0,60	0,60	mm

Material:
1.4034, hardened HRC 56 ± 2 stainless

Adjustable inserts for DATI 1000

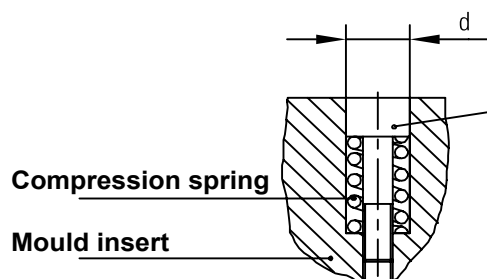
Type	F	G	O
Indicator	Adjustable inserts with arrow + year	Adjustable inserts with arrow without year	Adjustable inserts according to customer preference with numbers and / or letters
D	Order no.	Order no.	Order no.
3	F/3/Jahr(Year)	G/3/00	O/3/Zeichen(Symbol)
4	F/4/Jahr(Year)	G/4/00	O/4/Zeichen(Symbol)
5	F/5/Jahr(Year)	G/5/00	O/5/Zeichen(Symbol)
6	F/6/Jahr(Year)	G/6/00	O/6/Zeichen(Symbol)
8	F/8/Jahr(Year)	G/8/00	O/8/Zeichen(Symbol)
10	F/10/Jahr(Year)	G/10/00	O/10/Zeichen(Symbol)
12	F/12/Jahr(Year)	G/12/00	O/12/Zeichen(Symbol)
16	F/16/Jahr(Year)	G/16/00	O/16/Zeichen(Symbol)



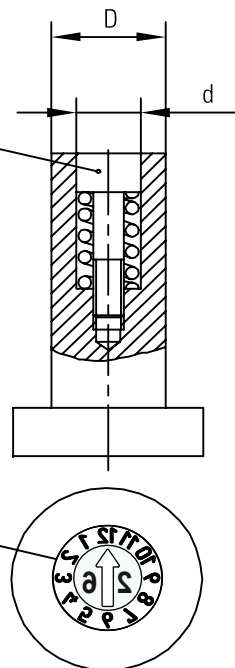
DATI 1000

DATI 1000 – installation variation for adjustable insert

Installation in mould cavity



Installation in ejector pin

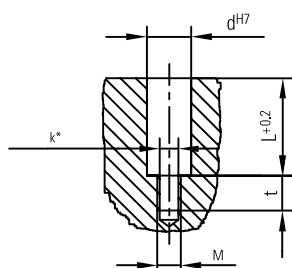
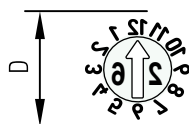


Adjustable inserts with compression spring page 13

Compression spring

Mould insert

Eroding image literally reversed



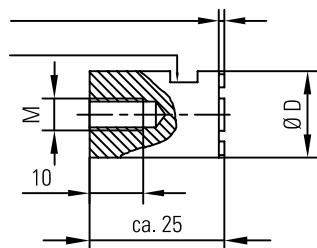
* k = core drilling

Dimension table in mm					
D	d	L	k	M	t
4	2,5	6,7	1,2	1,4 x 0,2	4
5	3,1	9,5	1,4	1,6 x 0,2	4
6	3,1	9,5	1,4	1,6 x 0,2	4
8	4,6	11	2,1	2,5 x 0,35	6
10	4,6	11	2,1	2,5 x 0,35	6
12	6,4	14	2,5	3,0	7
16	8,4	18	2,9	3,5	10

Electrode

Engraving image acc. to Dati type list type A – Z

Example type A



Dimension table in mm			
D	M	relief height	Euro
4	2	0,5	35,00
5	3	0,5	35,00
6	4	0,5	35,00
8	4	0,5	35,00
10	4	0,5	35,00
12	6	1,0	39,00
16	6	1,0	39,00

Ordering: electrode Ø 6 with months 1 – 12 acc. to type list: 1-A-6

Material: copper