

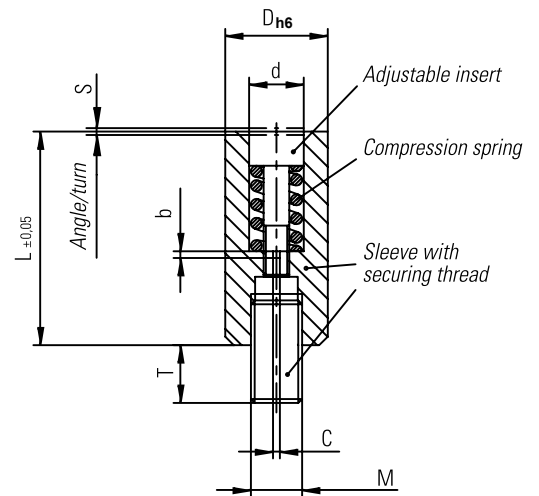
DATI 1200

Identification stamp with fast-change system $\varnothing 3 - 16$ mm with height adjustment, mountable from the mould parting surface

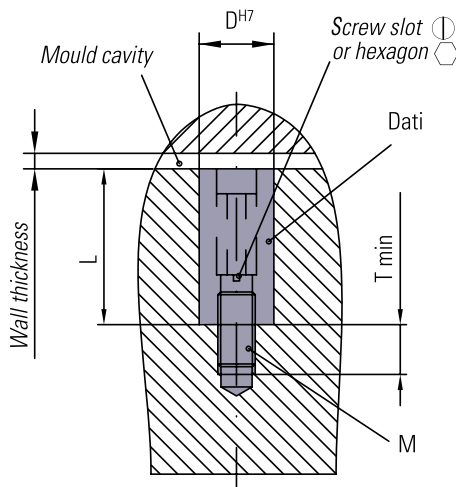
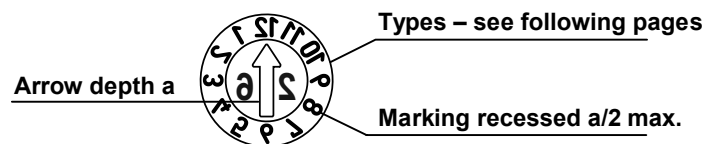
DATI®-DESCRIPTION



- Sleeve with identifier
- Adjustable insert with indicator arrow.
- The recessed indicator arrow is used as a screw slot for adjustment and to change the insert
- Secured by a threaded pin. Screw DATI with a screw slot. Remove adjustable insert for this purpose
- Material for sleeve and adjustable insert: 1.4034, hardened HRC 56 ± 2



Installation



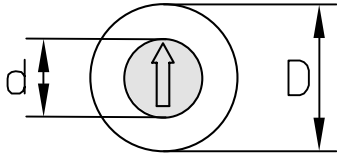
Dimension table in mm									
D	d	L	M	T	a	b	c	\varnothing	S
3	1,6	14	2	4	0,20	1,5	SW 1,3		0,25
4	2,5	14	2	4	0,30	1,5	SW 1,5		0,20
5	3,1	17	3	4	0,40	0,5	0,6		0,20
6	3,1	17	3	4	0,40	0,5	0,6		0,20
8	4,6	20	4	4	0,40	0,7	1,0		0,35
10	4,6	20	5	4	0,40	0,7	1,0		0,35
12	6,4	25	6	6	0,60	1,0	1,2		0,50
16	8,4	33	8	8	0,60	1,0	1,2		0,60

FAST CHANGING SYSTEM

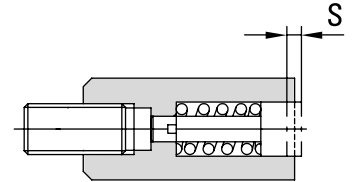
			At the end of each year, the adjustable insert with year is changed in a matter of seconds by removing and screwing it in. - Stop production, open mould - Change adjustable insert, set date - Continue production - Check setting on moulded part
To screw in adjustable insert: • Turn clockwise • Adjust height according to visual estimate	To turn adjustable insert: • Turn clockwise or counter-clockwise • Check height adjustment	To change adjustable insert: • Turn continuously counter-clockwise • The adjustable insert will raise • Remove adjustable insert	

DATI 1200

Identification stamp with fast-change system Ø 3 – 16 mm with height adjustment, mountable from the mould parting surface



Dimension table in mm									
D	3	4	5	6	8	10	12	16	mm
d	1,6	2,5	3,1	3,1	4,6	4,6	6,4	8,4	mm

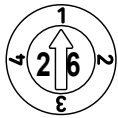





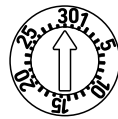
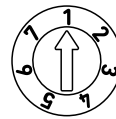
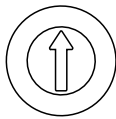
Type	A	B	C	CC
Indicator				
Indicator	Months + year (e.g. dec. 26)	Months (e.g. dec.) connected with type C (displays e.g. dec. 26)	Year + 5 years connected with type B (displays e.g. dec. 26)	Year + 11 years connected with type B (displays e.g. dec. 26)
D	Order no.	Order no.	Order no.	Order no.
3	A/1203/Jahr(Year)	B/1203/00	C/1203/Jahr(Year)+5	CC/1203/Jahr(Year)+11
4	A/1204/Jahr(Year)	B/1204/00	C/1204/Jahr(Year)+5	CC/1204/Jahr(Year)+11
5	A/1205/Jahr(Year)	B/1205/00	C/1205/Jahr(Year)+5	CC/1205/Jahr(Year)+11
6	A/1206/Jahr(Year)	B/1206/00	C/1206/Jahr(Year)+5	CC/1206/Jahr(Year)+11
8	A/1208/Jahr(Year)	B/1208/00	C/1208/Jahr(Year)+5	CC/1208/Jahr(Year)+11
10	A/1210/Jahr(Year)	B/1210/00	C/1210/Jahr(Year)+5	CC/1210/Jahr(Year)+11
12	A/1212/Jahr(Year)	B/1212/00	C/1212/Jahr(Year)+5	CC/1212/Jahr(Year)+11
16	A/1216/Jahr(Year)	B/1216/00	C/1216/Jahr(Year)+5	CC/1216/Jahr(Year)+11

Type	D + E	H + I	L + E	J
Indicator				
Indicator	Week + year (e.g. add up to combination of numbers 30 and 5 results in 30 + 5: calendar week 35/26)	Days (e.g. 20 + 9 = 29) connected with type A (displays e.g. 29. dec. 26)	Days + month + year (e.g. 25. may 26)	Shift numbers (e.g. 2nd shift)
D	Order no.	Order no.	Order no.	Order no.
3	D+E/1203/Jahr(Year)	H+I/1203/00	L+E/1203/Jahr(Year)	J/1203/00
4	D+E/1204/Jahr(Year)	H+I/1204/00	L+E/1204/Jahr(Year)	J/1204/00
5	D+E/1205/Jahr(Year)	H+I/1205/00	L+E/1205/Jahr(Year)	J/1205/00
6	D+E/1206/Jahr(Year)	H+I/1206/00	L+E/1206/Jahr(Year)	J/1206/00
8	D+E/1208/Jahr(Year)	H+I/1208/00	L+E/1208/Jahr(Year)	J/1208/00
10	D+E/1210/Jahr(Year)	H+I/1210/00	L+E/1210/Jahr(Year)	J/1210/00
12	D+E/1212/Jahr(Year)	H+I/1212/00	L+E/1212/Jahr(Year)	J/1212/00
16	D+E/1216/Jahr(Year)	H+I/1216/00	L+E/1216/Jahr(Year)	J/1216/00

DATI 1200

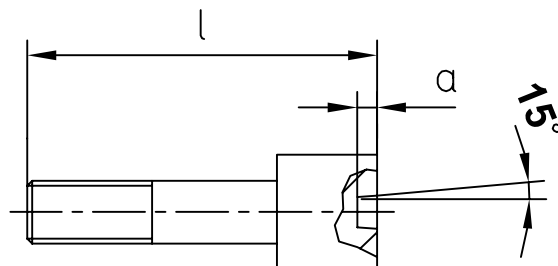
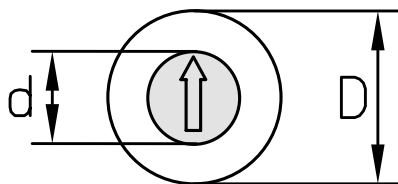
Identification stamp with fast-change system Ø 3 – 16 mm with height adjustment, mountable from the mould parting surface

Type	K	M	N	R
Indicator				
	Quarter + year (e.g. 1st quarter 26)	Identifier letters A – M (type M)	Identifier letters N – Z (type N)	Identification according to customers preference e.g. material identification
D	Order no.	Order no.	Order no.	Order no.
3	K/1203/Jahr(Year)	M/1203/00	N/1203/00	R/1203/Zeichen(Symbol)
4	K/1204/Jahr(Year)	M/1204/00	N/1204/00	R/1204/Zeichen(Symbol)
5	K/1205/Jahr(Year)	M/1205/00	N/1205/00	R/1205/Zeichen(Symbol)
6	K/1206/Jahr(Year)	M/1206/00	N/1206/00	R/1206/Zeichen(Symbol)
8	K/1208/Jahr(Year)	M/1208/00	N/1208/00	R/1208/Zeichen(Symbol)
10	K/1210/Jahr(Year)	M/1210/00	N/1210/00	R/1210/Zeichen(Symbol)
12	K/1212/Jahr(Year)	M/1212/00	N/1212/00	R/1212/Zeichen(Symbol)
16	K/1216/Jahr(Year)	M/1216/00	N/1216/00	R/1216/Zeichen(Symbol)

Type	T	WT	Z
Indicator			
	Days 1 – 31	Weekdays 1 – 7	without markings
D	Order no.	Order no.	Order no.
3	T/1203/00	WT/1203/00	Z/1203/00
4	T/1204/00	WT/1204/00	Z/1204/00
5	T/1205/00	WT/1205/00	Z/1205/00
6	T/1206/00	WT/1206/00	Z/1206/00
8	T/1208/00	WT/1208/00	Z/1208/00
10	T/1210/00	WT/1210/00	Z/1210/00
12	T/1212/00	WT/1212/00	Z/1212/00
16	T/1216/00	WT/1216/00	Z/1216/00

DATI 1200

Adjustable inserts for DATI 1000 / 1200 / 2000 / 2100 / 2200



Dimension table in mm									
D	3	4	5	6	8	10	12	16	mm
d	1,6	2,5	3,1	3,1	4,6	4,6	6,4	8,4	mm
l	9	10,5	13	13	14	14	17	23	mm
a	0,20	0,30	0,40	0,40	0,40	0,40	0,60	0,60	mm

Material:
1.4034, hardened HRC 56 ± 2 stainless

Adjustable inserts for DATI 1200

Type	F	G	O
Indicator	Adjustable inserts with arrow + year	Adjustable inserts with arrow without year	Adjustable inserts according to customer preference with numbers and / or letters
D	Order no.	Order no.	Order no.
3	F/3/Jahr(Year)	G/3/00	O/3/Zeichen(Symbol)
4	F/4/Jahr(Year)	G/4/00	O/4/Zeichen(Symbol)
5	F/5/Jahr(Year)	G/5/00	O/5/Zeichen(Symbol)
6	F/6/Jahr(Year)	G/6/00	O/6/Zeichen(Symbol)
8	F/8/Jahr(Year)	G/8/00	O/8/Zeichen(Symbol)
10	F/10/Jahr(Year)	G/10/00	O/10/Zeichen(Symbol)
12	F/12/Jahr(Year)	G/12/00	O/12/Zeichen(Symbol)
16	F/16/Jahr(Year)	G/16/00	O/16/Zeichen(Symbol)