

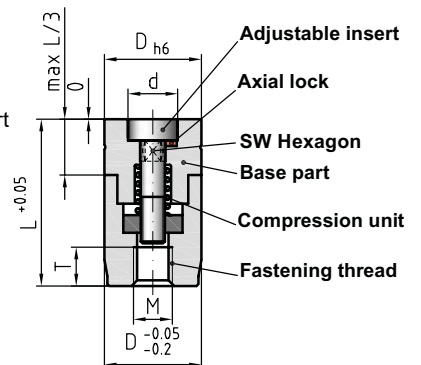
## DATI 2400

Identification stamp with fast-change system  $\varnothing 2,6 - 20$  mm without height adjustment, with latching function, short version, with fastening thread, installation also possible from the mould parting surface

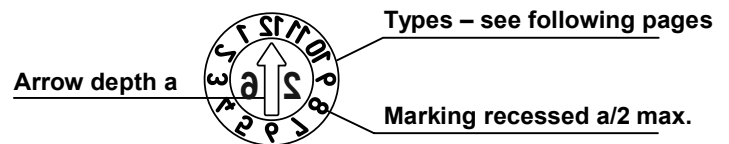
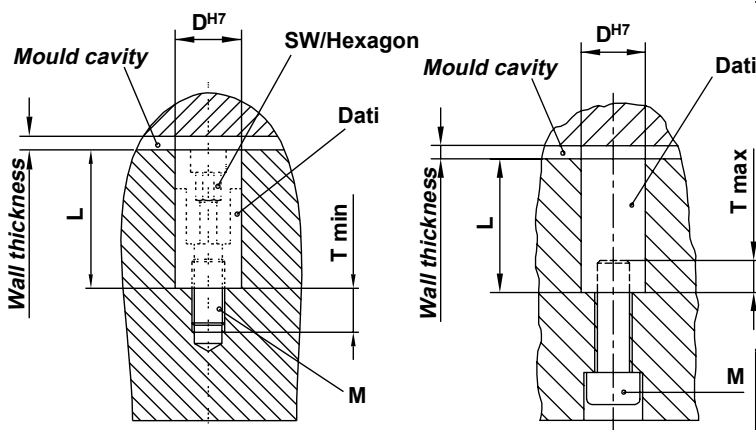
### DATI®-DESCRIPTION



- Sleeve with identifier
- Adjustable insert with an indicator arrow. The recessed indicator arrow is used as a screw slot for adjustment and to change the insert
- Compression unit for the infinite locking of the adjustable insert individual
- Material für sleeve and adjustable insert: 1.4034, hardened HRC 56 ± 2 stainless
- Marking laterally reversed
- Fastening thread
- The threaded pin can be included in the delivery on request



### Installation



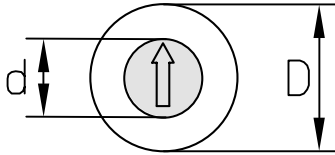
Dimension table in mm						
D	d	L	M	T	a	SW
2,6	1,4	7	1,6	2,5	0,2	T4
2,8	1,4	7	1,6	2,5	0,2	T4
3	1,6	7	2	2,5	0,2	T4
3,5	1,6	8	2	3	0,2	T4
4	2,5	8	2	2,5	0,3	1,5
5	3,1	12	3	3	0,4	2
6	3,1	12	3	3	0,4	2
8	4,4	14	4	3	0,4	2,5
10	5,2	16	4	3	0,4	3
12	6,2	20	5	4	0,6	4
16	8,2	20	5	4	0,6	4
20	11	22	5	4	0,6	4

### FAST CHANGING SYSTEM

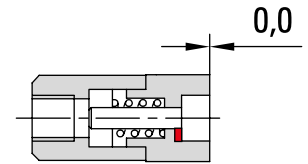
FAST CHANGING SYSTEM			At the end of each year, the adjustable insert with year is changed in a matter of seconds by removing and screwing it in. - Stop production, open mould - Change adjustable insert, set date - Continue production - Check setting on moulded part
<p>To screw in adjustable insert:</p> <ul style="list-style-type: none"> <li>• Turn clockwise</li> <li>• Max. to end position</li> <li>• Tenses automatically</li> <li>• Tensioning range 3 – 5 turns</li> </ul>	<p>To turn adjustable insert:</p> <ul style="list-style-type: none"> <li>• Turn clockwise or counter clockwise</li> <li>• Set desired position</li> <li>• Reclamp if necessary by turning clockwise</li> </ul>	<p>To change adjustable insert:</p> <ul style="list-style-type: none"> <li>• Turn continuously counter clockwise</li> <li>• The adjustable insert will raise</li> <li>• Remove adjustable insert</li> </ul>	

## DATI 2400

Identification stamp with fast-change system Ø 2,6 – 20 mm without height adjustment, with latching function, short version, with fastening thread, installation also possible from the mould parting surface



Dimension table in mm													
D	2,6	2,8	3	3,5	4	5	6	8	10	12	16	20	mm
d	1,4	1,4	1,6	1,6	2,5	3,1	3,1	4,4	5,2	6,2	8,2	11	mm

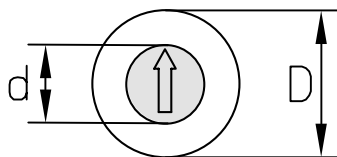


Type	A	B	C	CC
Indicator	Months + year (e.g. dec. 26)	Months (e.g. dec.) connected with type C (displays e.g. dec. 26)	Year + 5 years connected with type B (displays e.g. dec. 26)	Year + 11 years connected with type B (displays e.g. dec. 26)
D	Order no.	Order no.	Order no.	Order no.
2,6	A/2402,6/Jahr(Year)	B/2402,6/00	C/2402,6/Jahr(Year)	CC/2402,6/Jahr(Year)
2,8	A/2402,8/Jahr(Year)	B/2402,8/00	C/2402,8/Jahr(Year)	CC/2402,8/Jahr(Year)
3	A/2403/Jahr(Year)	B/2403/00	C/2403/Jahr(Year)	CC/2403/Jahr(Year)
3,5	A/2403,5/Jahr(Year)	B/2403,5/00	C/2403,5/Jahr(Year)	CC/2403,5/Jahr(Year)
4	A/2404/Jahr(Year)	B/2404/00	C/2404/Jahr(Year)+5	CC/2404/Jahr(Year)+11
5	A/2405/Jahr(Year)	B/2405/00	C/2405/Jahr(Year)+5	CC/2405/Jahr(Year)+11
6	A/2406/Jahr(Year)	B/2406/00	C/2406/Jahr(Year)+5	CC/2406/Jahr(Year)+11
8	A/2408/Jahr(Year)	B/2408/00	C/2408/Jahr(Year)+5	CC/2408/Jahr(Year)+11
10	A/2410/Jahr(Year)	B/2410/00	C/2410/Jahr(Year)+5	CC/2410/Jahr(Year)+11
12	A/2412/Jahr(Year)	B/2412/00	C/2412/Jahr(Year)+5	CC/2412/Jahr(Year)+11
16	A/2416/Jahr(Year)	B/2416/00	C/2416/Jahr(Year)+5	CC/2416/Jahr(Year)+11
20	A/2420/Jahr(Year)	B/2420/00	C/2420/Jahr(Year)+5	CC/2420/Jahr(Year)+11

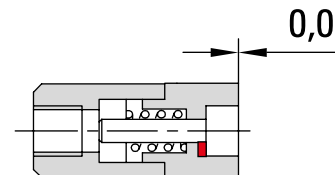
Type	D + E	H + I	L + E	J
Indicator	Week + year (e.g. the combination numbers 30 + 0: calendar week 30/26)	Days (e.g. 20 + 0 = 20) connected with type A (displays e.g. 25. dec. 26)	Days + month + year (e.g. 20. may 26) 12 x month 01 ... 12	Shift numbers (e.g. 2nd shift)
D	Order no.	Order no.	Order no.	Order no.
2,6	D+E/2402,6/Jahr(Year)	H+I/2402,6/Jahr(Year)	L+E/2402,6/Jahr(Year)	J/2402,6/Jahr(Year)
2,8	D+E/2402,8/Jahr(Year)	H+I/2402,8/Jahr(Year)	L+E/2402,8/Jahr(Year)	J/2402,8/Jahr(Year)
3	D+E/2403/Jahr(Year)	H+I/2403/Jahr(Year)	L+E/2403/Jahr(Year)	J/2403/Jahr(Year)
3,5	D+E/2403,5/Jahr(Year)	H+I/2403,5/Jahr(Year)	L+E/2403,5/Jahr(Year)	J/2403,5/Jahr(Year)
4	D+E/2404/Jahr(Year)	H+I/2404/00	L+E/2404/Jahr(Year)	J/2404/00
5	D+E/2405/Jahr(Year)	H+I/2405/00	L+E/2405/Jahr(Year)	J/2405/00
6	D+E/2406/Jahr(Year)	H+I/2406/00	L+E/2406/Jahr(Year)	J/2406/00
8	D+E/2408/Jahr(Year)	H+I/2408/00	L+E/2408/Jahr(Year)	J/2408/00
10	D+E/2410/Jahr(Year)	H+I/2410/00	L+E/2410/Jahr(Year)	J/2410/00
12	D+E/2412/Jahr(Year)	H+I/2412/00	L+E/2412/Jahr(Year)	J/2412/00
16	D+E/2416/Jahr(Year)	H+I/2416/00	L+E/2416/Jahr(Year)	J/2416/00
20	D+E/2420/Jahr(Year)	H+I/2420/00	L+E/2420/Jahr(Year)	J/2420/00

## DATI 2400

Identification stamp with fast-change system  $\varnothing$  2,6 – 20 mm without height adjustment, with latching function, short version, with fastening thread, installation also possible from the mould parting surface



Dimension table in mm													
D	2,6	2,8	3	3,5	4	5	6	8	10	12	16	20	mm
d	1,4	1,4	1,6	1,6	2,5	3,1	3,1	4,4	5,2	6,2	8,2	11	mm

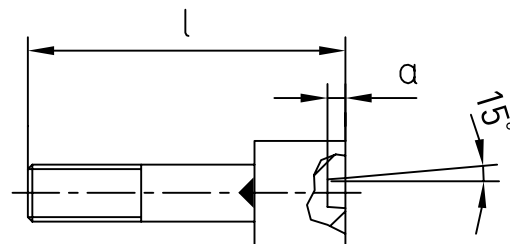
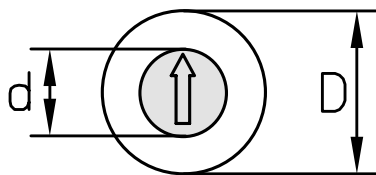


Type	K	M	N	R
Indicator				
D	Order no.	Order no.	Order no.	Order no.
2,6	K/2402,6/Jahr(Year)	M/2402,6/Jahr(Year)	N/2402,6/Jahr(Year)	R/2402,6/Jahr(Year)
2,8	K/2402,8/Jahr(Year)	M/2402,8/Jahr(Year)	N/2402,8/Jahr(Year)	R/2402,8/Jahr(Year)
3	K/2403/Jahr(Year)	M/2403/Jahr(Year)	N/2403/Jahr(Year)	R/2403/Jahr(Year)
3,5	K/2403,5/Jahr(Year)	M/2403,5/Jahr(Year)	N/2403,5/Jahr(Year)	R/2403,5/Jahr(Year)
4	K/2404/Jahr(Year)	M/2404/00	N/2404/00	R/2404/Zeichen(Symbol)
5	K/2405/Jahr(Year)	M/2405/00	N/2405/00	R/2405/Zeichen(Symbol)
6	K/2406/Jahr(Year)	M/2406/00	N/2406/00	R/2406/Zeichen(Symbol)
8	K/2408/Jahr(Year)	M/2408/00	N/2408/00	R/2408/Zeichen(Symbol)
10	K/2410/Jahr(Year)	M/2410/00	N/2410/00	R/2410/Zeichen(Symbol)
12	K/2412/Jahr(Year)	M/2412/00	N/2412/00	R/2412/Zeichen(Symbol)
16	K/2416/Jahr(Year)	M/2416/00	N/2416/00	R/2416/Zeichen(Symbol)
20	K/2420/Jahr(Year)	M/2420/00	N/2420/00	R/2420/Zeichen(Symbol)

Type	TR	Z
Indicator		
D	Order no.	Order no.
2,6		Z/2402,6/00
2,8		Z/2402,8/00
3		Z/2403/00
3,5		Z/2403,5/00
4		Z/2404/00
5	TR/2405/00	Z/2405/00
6	TR/2406/00	Z/2406/00
8	TR/2408/00	Z/2408/00
10	TR/2410/00	Z/2410/00
12	TR/2412/00	Z/2412/00
16	TR/2416/00	Z/2416/00
20		Z/2420/00

## DATI 2400

Adjustable inserts for DATI 2400



Dimension table in mm

D	2,6	2,8	3	3,5	4	5	6	8	10	12	16	20	mm
d	1,4	1,4	1,6	1,6	2,5	3,1	3,1	4,4	5,2	6,2	8,2	11	mm
l	3,9	3,9	3,9	3,9	4,9	7,8	7,8	9,8	11,8	13,8	13,8	22	mm
a	0,2	0,2	0,2	0,2	0,3	0,4	0,4	0,4	0,4	0,6	0,6	0,6	mm

Material:  
1.4034, hardened HRC 56 ± 2  
stainless

### Adjustable inserts for DATI 2400

Type	F		G		O	
Indicator	Adjustable inserts with arrow + year		Adjustable inserts with an arrow without year		Adjustable inserts according to customer preference with numbers and / or letters	
D	Order no.		Order no.		Order no.	
2,6	F/2402,6/Jahr(Year)		G/2402,6/00		O/2402,6/Symbol	
2,8	F/2402,8/Jahr(Year)		G/2402,8/00		O/2402,8/Symbol	
3	F/2403/Jahr(Year)		G/2403/00		O/2403/Symbol	
3,5	F/2403,5/Jahr(Year)		G/2403,5/00		O/2403,5/Symbol	
4	F/2404/Jahr(Year)		G/2404/00		O/2404/Symbol	
5	F/2405/Jahr(Year)		G/2405/00		O/2405/Symbol	
6	F/2406/Jahr(Year)		G/2406/00		O/2406/Symbol	
8	F/2408/Jahr(Year)		G/2408/00		O/2408/Symbol	
10	F/2410/Jahr(Year)		G/2410/00		O/2410/Symbol	
12	F/2412/Jahr(Year)		G/2412/00		O/2412/Symbol	
16	F/2416/Jahr(Year)		G/2416/00		O/2416/Symbol	
20	F/2420/Jahr(Year)		G/2420/00		O/2420/Symbol	

