

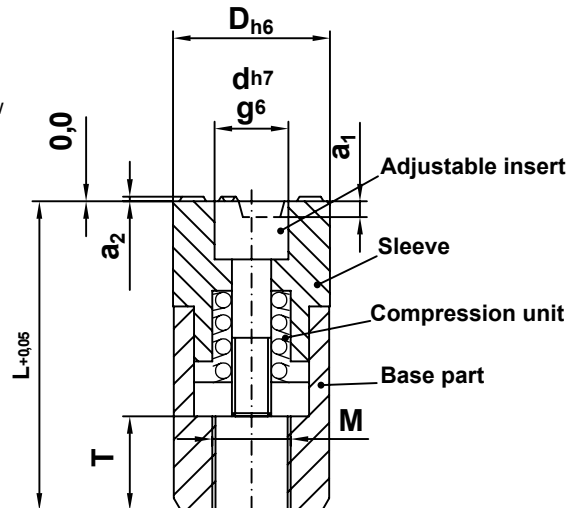
DATI 7000

Identification stamp raised to emboss metals or other materials \varnothing 5– 16 mm without height adjustment, raised engraving



DATI®-DESCRIPTION

- Sleeve with raised identification
- Adjustable insert with an indicator arrow.
- The recessed screw slot with raised indicator arrow is used for adjustment and to change the insert
- Fastening thread
- Compression unit, for the infinite locking of the adjustable insert
- Material for sleeve and adjustable insert: 1.4034, hardened HRC 56 +/- 2
- Inscription laterally reversed and raised



Dimension table in mm						
D	d	L	M	T	a ₁	a ₂
5	3,1	16,7	3	3	1,0	0,3
6	3,1	16,7	3	3	1,0	0,3
8	4,6	19,5	4	4	1,5	0,5
10	4,6	19,5	5	4	1,5	0,5
12	6,4	24,5	6	6	1,5	0,5
16	8,4	32,5	8	8	1,5	0,5

Raised a₂

Arrow depth a₁



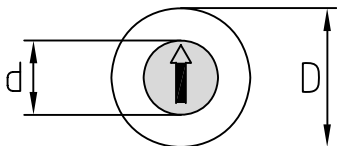
Types – see following pages

Marking raised a₂

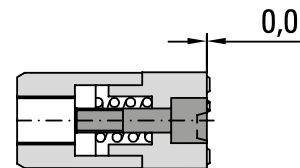
FAST CHANGING SYSTEM			
			<p>At the end of each year, the adjustable insert with year is changed in a matter of seconds by removing and screwing it in.</p> <ul style="list-style-type: none"> - Stop production, open mould - Change adjustable insert, set date - Continue production - Check setting on moulded part
<p>To screw in adjustable insert:</p> <ul style="list-style-type: none"> • Turn clockwise • Max. to end position • Tenses automatically • Tensioning range 3 – 5 turns 	<p>To turn adjustable insert:</p> <ul style="list-style-type: none"> • Turn clockwise or counter clockwise • Set desired position • Reclamp if necessary by turning clockwise 	<p>To change adjustable insert:</p> <ul style="list-style-type: none"> • Turn continuously counter clockwise • The adjustable insert will raise • Remove adjustable insert 	

DATI 7000

Identification stamp raised to emboss metals or other materials Ø 5– 16 mm without height adjustment, raised engraving



Dimension table in mm							
D	5	6	8	10	12	16	mm
d	3,1	3,1	4,6	4,6	6,4	8,4	mm

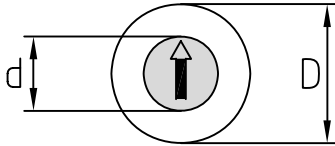


Type	A	B	C	CC
Indicator	Months + year (e.g. dec. 26)	Months (e.g. dec.) connected with type C (displays e.g. dec. 26)	Year + 5 years connected with type B (displays e.g. dec. 26)	Year + 11 years connected with type B (displays e.g. dec. 26)
D	Order no.	Order no.	Order no.	Order no.
5	A/7005/Jahr(Year)	B/7005/00	C/7005/Jahr(Year)+5	CC/7005/Jahr(Year)+11
6	A/7006/Jahr(Year)	B/7006/00	C/7006/Jahr(Year)+5	CC/7006/Jahr(Year)+11
8	A/7008/Jahr(Year)	B/7008/00	C/7008/Jahr(Year)+5	CC/7008/Jahr(Year)+11
10	A/7010/Jahr(Year)	B/7010/00	C/7010/Jahr(Year)+5	CC/7010/Jahr(Year)+11
12	A/7012/Jahr(Year)	B/7012/00	C/7012/Jahr(Year)+5	CC/7012/Jahr(Year)+11
16	A/7016/Jahr(Year)	B/7016/00	C/7016/Jahr(Year)+5	CC/7016/Jahr(Year)+11

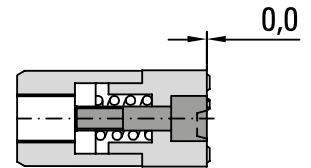
Type	D + E	H + I	L + E	J
Indicator	Week + year (e.g. the combination of the numbers 30 and 5 results in 30 + 5: calendar week 35/26)	Days (e.g. 20 + 5 = 25) connected with type A (displays e.g. 25. dec. 26)	Days + month + year (e.g. 25. may 26)	Shift numbers (e.g. 2nd shift)
D	Order no.	Order no.	Order no.	Order no.
5	D+E/7005/Jahr(Year)	H+I/7005/00	L+E/7005/Jahr(Year)	J/7005/00
6	D+E/7006/Jahr(Year)	H+I/7006/00	L+E/7006/Jahr(Year)	J/7006/00
8	D+E/7008/Jahr(Year)	H+I/7008/00	L+E/7008/Jahr(Year)	J/7008/00
10	D+E/7010/Jahr(Year)	H+I/7010/00	L+E/7010/Jahr(Year)	J/7010/00
12	D+E/7012/Jahr(Year)	H+I/7012/00	L+E/7012/Jahr(Year)	J/7012/00
16	D+E/7016/Jahr(Year)	H+I/7016/00	L+E/7016/Jahr(Year)	J/7016/00

DATI 7000

Identification stamp raised to emboss metals or other materials $\varnothing 5 - 16$ mm without height adjustment, raised engraving



Dimension table in mm							
D	5	6	8	10	12	16	mm
d	3,1	3,1	4,6	4,6	6,4	8,4	mm

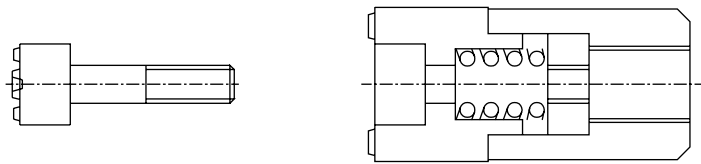
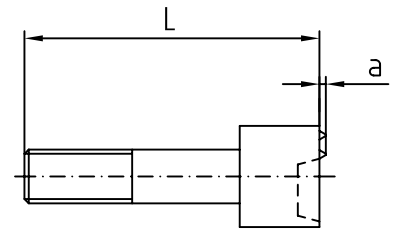
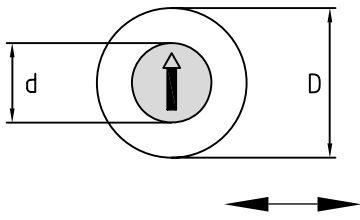


Type	K	M	N	R
Indicator				
D	Order no.	Order no.	Order no.	Order no.
5	K/7005/Jahr(Year)	M/7005/00	N/7005/00	R/7005/Zeichen(Symbol)
6	K/7006/Jahr(Year)	M/7006/00	N/7006/00	R/7006/Zeichen(Symbol)
8	K/7008/Jahr(Year)	M/7008/00	N/7008/00	R/7008/Zeichen(Symbol)
10	K/7010/Jahr(Year)	M/7010/00	N/7010/00	R/7010/Zeichen(Symbol)
12	K/7012/Jahr(Year)	M/7012/00	N/7012/00	R/7012/Zeichen(Symbol)
16	K/7016/Jahr(Year)	M/7016/00	N/7016/00	R/7016/Zeichen(Symbol)

Type	T	Z
Indicator		
D	Order no.	Order no.
5	T/7005/00	WT/7005/00
6	T/7006/00	WT/7006/00
8	T/7008/00	WT/7008/00
10	T/7010/00	WT/7010/00
12	T/7012/00	WT/7012/00
16	T/7016/00	WT/7016/00

DATI 7000

DATI 7000 Adjustable inserts



Material: 1.4034, hardened HRC 56 ± 2 stainless

Dimension table in mm							
D	5	6	8	10	12	16	mm
d	3,1	3,1	4,6	4,6	6,4	8,4	mm
l	12,7	12,7	13,5	13,5	16,5	22,5	mm
a	0,3	0,3	0,5	0,5	0,5	0,5	mm

Adjustable insert must fit under tension. Re-clamp by turning clockwise.

Adjustable inserts for DATI 7000

Type	F	G	O
Indicator	Adjustable inserts with arrow + year	Adjustable inserts with arrow without year	Adjustable inserts according to customer preference with numbers and / or letters
D	Order no.	Order no.	Order no.
5	F/7005/Jahr(Year)	G/7005/00	O/7005/Zeichen(Symbol)
6	F/7006/Jahr(Year)	G/7006/00	O/7006/Zeichen(Symbol)
8	F/7008/Jahr(Year)	G/7008/00	O/7008/Zeichen(Symbol)
10	F/7010/Jahr(Year)	G/7010/00	O/7010/Zeichen(Symbol)
12	F/7012/Jahr(Year)	G/7012/00	O/7012/Zeichen(Symbol)
16	F/7016/Jahr(Year)	G/7016/00	O/7016/Zeichen(Symbol)

