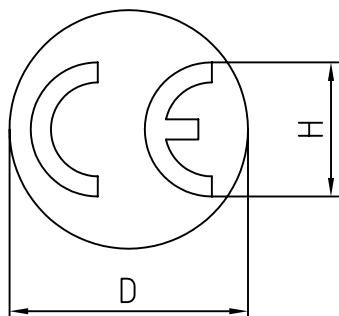


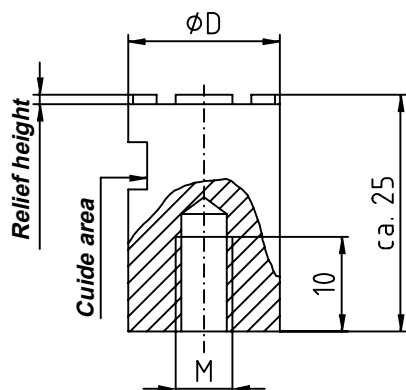
CE symbol type 006

Type 006



Dimension table in mm	
D	H
4	2,3
5	2,9
6	3,5
8	4,5
10	6,0
12	7,0
16	9,0
20	12,0
30	18,0
40	24,0

Electrode No. 1-006



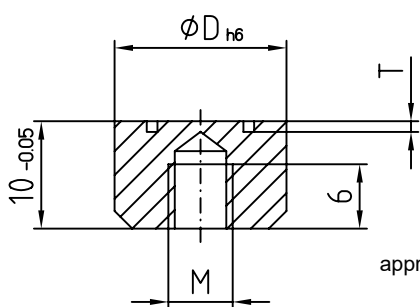
Characters legible raised

Material: copper

Dimension table in mm		
D	M	Relief height
4	/	0,4
5	3	0,5
6	4	0,5
8	4	0,5
10	4	0,5
12	6	1,0
16	6	1,0
20	6	1,0
30	8	1,0
40	8	1,0

Special variables as required

Insert No. 2-006



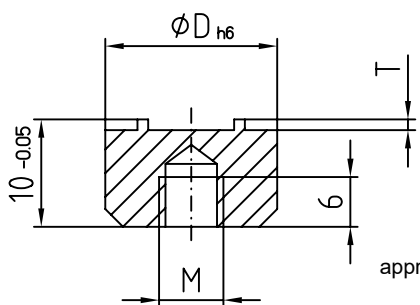
Characters in mirror writing recessed

Material: 1.4034 approx. HRC 56 ± 2 stainless steel

Dimension table in mm		
D	M	T
4	2	0,2
5	3	0,2
6	4	0,2
8	4	0,2
10	4	0,2
12	6	0,25
16	6	0,3

Special variables as required

Insert No. 3-006



Characters in mirror writing recessed

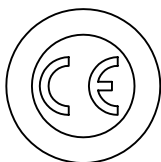
Material: 1.4034 approx. HRC 56 ± 2 stainless steel

Dimension table in mm		
D	M	T
4	2	0,2
5	3	0,2
6	4	0,2
8	4	0,2
10	4	0,2
12	6	0,25
16	6	0,3

Special variables as required

Type 006

Ejector pin No. 4-006

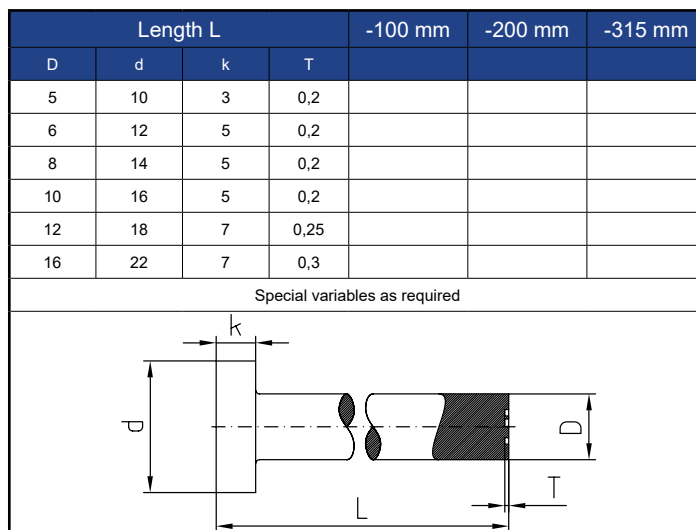


Characters in mirror writing recessed

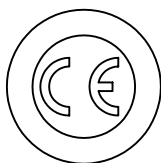
pursuant DIN / ISO 6751

Example order:

4-006-10-L=110,3
corresponds ejector pin with diameter 10 with length 110,3



Ejector pin No. 5-006

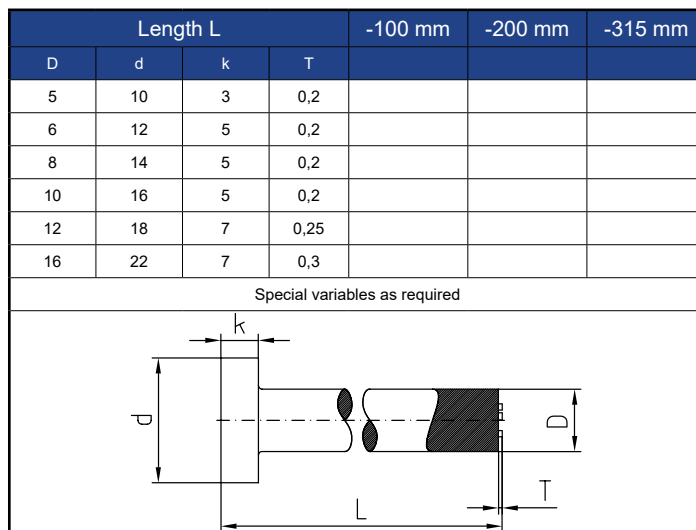


Characters in mirror writing recessed

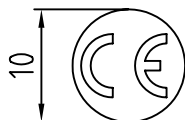
pursuant DIN / ISO 6751

Example order:

5-006-10-L=110,3
corresponds ejector pin with diameter 10 with length 110,3



Example order:



Electrode: 1-006-10
Insert recessed: 2-006-10
Insert raised: 3-006-10
Ejector pin recessed: 4-006-10-L=110,3
Ejector pin raised: 5-006-10-L=110,3