

KE SERIES ■

KE 12000



Ordering-Example:

Special Sizes Available On Request.

ACTIVE SAFETY

The new code will be supplied only when the old will be out of stock

easu
MANIFOLD

* F_{1i} = Isothermal end force at 100% Cu

** F_{1p} = Polytrophic end force at 100% Cu

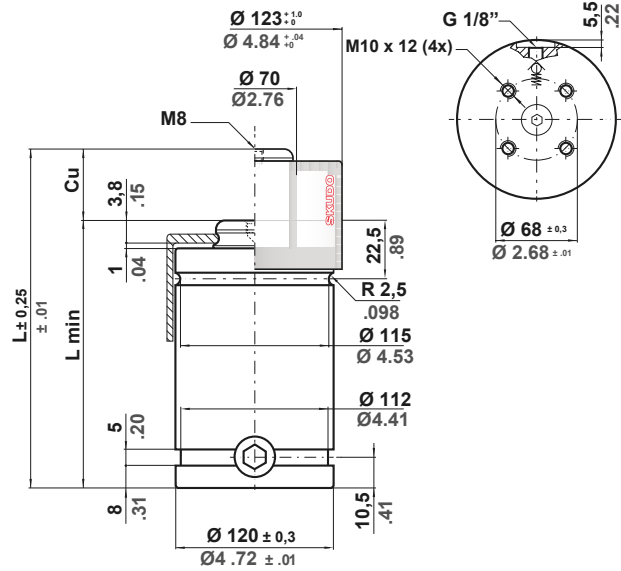
SW

OSAS

USAS

OPAS

SKUDO



	0 - 80 °C 32 - 176 °F	ΔP ± 0,33 %/°C	P max 150 bar 2175 psi	P min 20 bar 290 psi	S 78,54 cm ² 12,174 in ²	SPM ~ 50 - 100 (at 20°C)	Max Speed 0,8 m/s 31,5 in/s	Maintenance kit 39BMKE12000B
--	--------------------------	---------------------------	-------------------------------------	-----------------------------------	-------------------------------------------------------------	---------------------------------------	------------------------------------------	----------------------------------------

CODE	Cu		L		L min		F0 Initial force		F1i End force *		F1p End force **		V0		~Kg		~lb		PED 2014/68/EU
	mm	inch	mm	inch	mm	inch	daN	lb	daN	lb	daN	lb	cm ²	in ²					
KE 12000 - 010 - B	10	0.39	100	3.94	90	3,54	± 5% 150 bar 2175psi +20 °C +68 °F	11780	26482	17843	40113	21398	48104	267	16.28	5,49	12.10	✓	
KE 12000 - 016 - B	16	0.63	126	4.96	110	4,33				17646	39670	21084	47399	437	26.64	6,11	13.47	✓	
KE 12000 - 025 - B	25	0.98	155	6.10	130	5,12				18657	41943	22704	51040	613	37.39	6,76	14.90	✓	
KE 12000 - 032 - B	32	1.26	187	7.36	155	6,10				18166	40838	21913	49261	824	50.28	7,54	16.62	✓	
KE 12000 - 040 - B	40	1.57	220	8.66	180	7,09				18098	40687	21805	49020	1037	63.30	8,31	18.32	✓	
KE 12000 - 050 - B	50	1.97	260	10.24	210	8,27				18116	40727	21834	49084	1294	78.97	9,25	20.9	✓	
KE 12000 - 065 - B	65	2.56	320	12.60	255	10,04				18133	40764	21860	49143	1679	102.48	10,66	23.50	✓	

