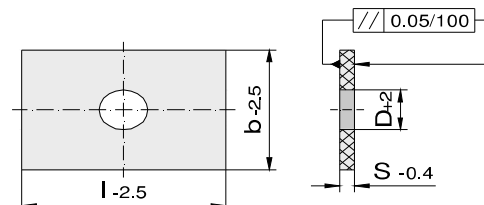
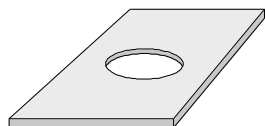


N 53

Insulating Board $P = 330 \text{ N/mm}^2$



Ordering-Example:

1 Piece N53 95/95/3/22

Special Sizes Available On Request

Application Temperature: 200°C
Thermal Conductivity: $0,18 \text{ W/mk}$

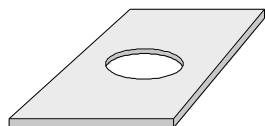
Dense: $1,8 \text{ g/cm}^3$

b	l	S	D	€
95	95	3	22	
100	130		22	
156	156		90	
	196		90	
	246		90	
	296		90	
190	396		90	
	246		90	
	296		90	
196	246		90	
	296		90	
	346		90	
206	156		90	
	196		90	
218	246		90	
	296		90	
246	246		90	
	296		90	
254	246		90	
276	246		90	
	296	90		
296	296	90		
95	95	5	22	
100	130		22	
156	156		90	
	196		90	
	246		90	
	296		90	
190	396		90	
	246		90	
	296		90	
196	246		90	
	296		90	
	346		90	
	396		90	
	446		90	
	496		90	
206	156		90	
	196		90	

b	l	S	D	€
218	246	5	90	
	296		90	
	396		90	
	246		246	90
246	296		90	
	346		90	
	396		90	
	446		90	
	496		90	
254	246		90	
276	246		90	
296	296		90	
	346		90	
	396		90	
	446	90		
	496	90		
346	546	90		
	596	90		
	346	90		
	396	90		
	446	90		
396	496	90		
	546	90		
	396	90		
126	156	6	90	
156	246		90	
	156		90	
	196		90	
	206		90	
	246		90	
	296		90	
	346		90	
	396		90	
	446		90	
	496	90		

N 53

Insulating Board $P = 330 \text{ N/mm}^2$



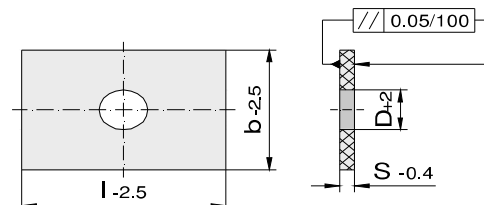
Ordering-Example:

1 Piece N53 196/196/6

Special Sizes Available On Request

Application Temperature: 200°C
Thermal Conductivity: $0,18 \text{ W/mk}$

Dense: $1,8 \text{ g/cm}^3$

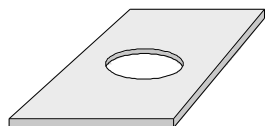


b	l	S	D	€
196	196	6	90	
	206		90	
	246		90	
	296		90	
	346		90	
	396		90	
	446		90	
	496		90	
216	246		90	
	296	90		
	396	90		
246	246	7	90	
	266		90	
	296		90	
	346		90	
	396		90	
	446		90	
	496		90	
	546		90	
	596		90	
266	296	90		
196	296	7	90	
	346		90	
	396		90	
	446		90	
218	396	90		
246	246	7	90	
	296		90	
	346		90	
	396		90	
	446		90	
254	246	90		
276	296	90		
296	296	7	90	
	346		90	
	396		90	
	446		90	
	496		90	
346	346	7	90	
	396		90	
	446		90	
	496		90	
	546		90	
396	396	7	90	
	496		90	

b	l	S	D	€		
396	446	7	90			
	496		90			
	546		90			
496	546	8	90			
296	296		90			
	346		90			
	396		90			
	446		90			
	496		90			
346	546		90			
	596		90			
	646		90			
	696	90				
	796	90				
	396	396	7	90		
		446		90		
		496		90		
		546		90		
		596		90		
		646		90		
696		90				
796		90				
446		446		7	90	
		496			90	
		546			90	
	596	90				
	696	90				
496	496	7	90			
	546		90			
	596		90			
	646		90			
	696		90			
	796	90				

N 53

Insulating Board $P = 330 \text{ N/mm}^2$



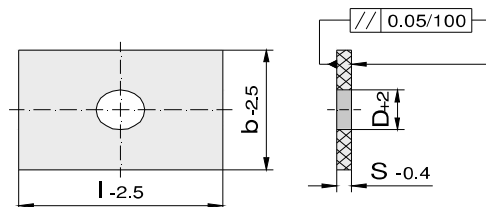
Ordering-Example:

1 Piece N53 546/546/8/90

Special Sizes Available On Request

Application Temperature: 200°C
Thermal Conductivity: $0,18 \text{ W/mk}$

Dense: $1,8 \text{ g/cm}^3$



b	l	S	D	€	
546	546	8	90		
	596		90		
	646		90		
	696		90		
	796		90		
596	596	8,5	90		
	646		90		
	696		90		
	796		90		
646	646		90		
	696		90		
	796		90		
246	496		8,5	90	
296	296			90	
	346			90	
	396			90	
	446			90	
	496			90	
	546			90	
	596			90	
696	90				
346	346	90			
	396	90			
	446	90			
	496	90			
	546	90			
	596	90			
	696	90			
396	396	90			
	446	90			
	496	90			
	546	90			
	596	90			
	696	90			
	796	90			
	896	90			

b	l	S	D	€
446	446	8,5	90	
	496		90	
	546		90	
	596		90	
	696		90	
	796		90	
	896		90	
496	496		90	
	546		90	
	596		90	
	696		90	
	796		90	
	896		90	
	996		90	
546	546		90	
	596	90		
	646	90		
	696	90		
	796	90		
	896	90		
	996	90		
596	596	90		
	696	90		
	796	90		
	896	90		
	996	90		
	646	596	90	
		696	90	
796		90		
896		90		
996		90		
696		696	90	
		796	90	
	896	90		
	996	90		
	796	796	90	
		896	90	
		996	90	
896		896	90	
		996	90	