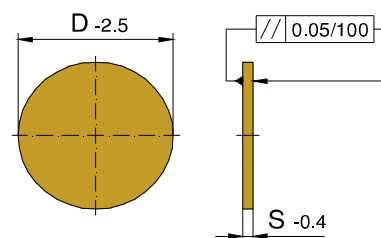


N 54

Insulating Board $P = 600 \text{ N/mm}^2$



Ordering-Example:

1 Piece N54 95/3

Special Sizes Available On Request

Application Temperature: 200°C

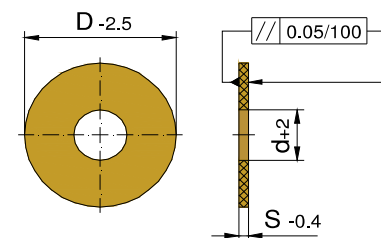
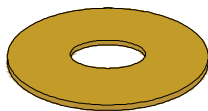
Thermal Conductivity: $0,19 \text{ W/mk}$

Dense: $1,9 \text{ g/cm}^3$

S	D	€
3	95	
	116	
	156	
5	156	
	196	
	246	
	296	
7	344	

N 55

Insulating Board $P = 600 \text{ N/mm}^2$



Ordering-Example:

1 Piece N55 95/3/22

Special Sizes Available On Request

Application Temperature: 200°C

Thermal Conductivity: $0,19 \text{ W/mk}$

Dense: $1,9 \text{ g/cm}^3$

S	d	D	€
3	22	95	
	90	156	
5	90	156	
		196	
		246	
		296	
7	90	344	