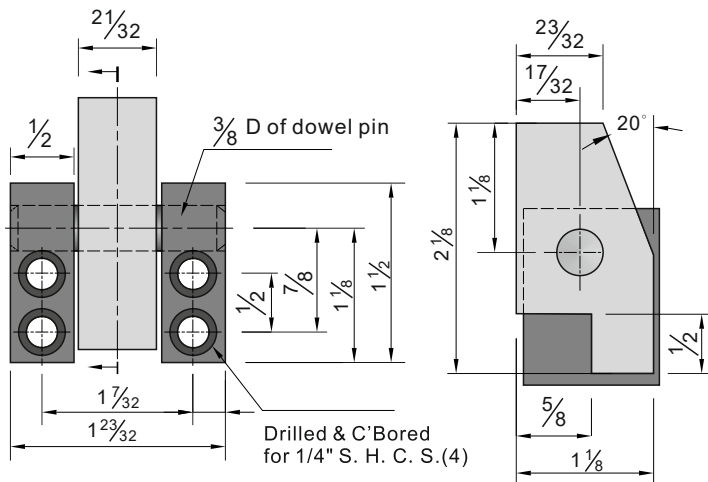


AISI

Accelerated ejectors

KAAKO



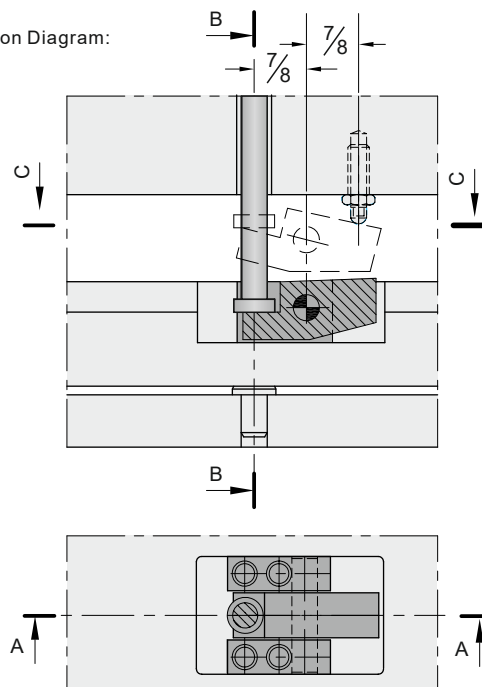
Code	
KAAKO	

Features:

The products can not be demoulded completely in the first eject if the mold has thick rib or needs greater force to demould,so that requests demould by hand or by adding the ejector stroke and then increase the mold structure.

If use the accelerated ejectors,it can solve the above problem and then improve the automation and simplify the structure.

Installation Diagram:



Functional chart:

