

KE 400

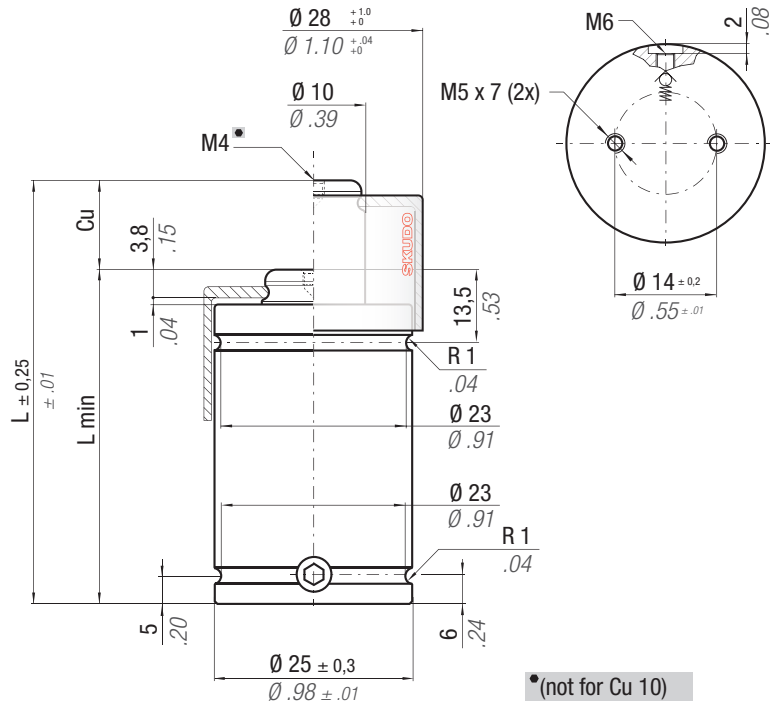
ACTIVE SAFETY

* $F_{1i} =$

Isothermal
end force
at 100% Cu

** $F_{1p} =$

Polytropic
end force
at 100% Cu



•(not for Cu 10)

	°F 32 176	°C 0 80	ΔP $\pm 0,33\%/^{\circ}C$	P max 150 bar 2175 psi	P min 20 bar 290 psi	S 2,84 cm ² 0.440 in ²	SPM ~ 50 - 100 (at 20°C)	Max Speed 0,8 m/s	Maintenance kit Disposable								
CODE	Cu		L		L min		F0 Initial force		F _{1i} * End force *		F _{1p} ** End force **		V0		 2014/68/EU		
	mm	inch	mm	inch	mm	inch	daN	lb	daN	lb	daN	lb	cm ³	in ³		~Kg	~lb
KE 400 - 006 - A	6	0.24	56	2.2	50	1.97	425 955 $\pm 5\%$ 150 bar 2175psi + 20 °C +68 °F		789	1774	1011	2273	4,0	0.24	0,13	0.29	✓
KE 400 - 010 - A	10	0.39	70	2.76	60	2.36			871	1958	1153	2592	6,0	0.37	0,16	0.35	✓
KE 400 - 016 - A	16	0.63	91	3.58	75	2.95			881	1981	1171	2633	10,0	0.61	0,18	0.40	✓
KE 400 - 025 - A	25	0.98	120	4.72	95	3.74			876	1969	1162	2612	16,0	0.98	0,23	0.51	✓
KE 400 - 032 - A	32	1.26	140	5.51	108	4.25			907	2040	1217	2736	19,0	1.16	0,24	0.53	✓
KE 400 - 040 - A	40	1.57	165	6.50	125	4.92			907	2039	1217	2736	24,0	1.46	0,28	0.62	✓
KE 400 - 050 - A	50	1.97	195	7.68	145	5.71			919	2065	1238	2783	30,0	1.83	0,31	0.68	✓

**WARNING
REMOVE SKUDO**

Upside down
mounting

FC / FCC
fixings

Drop-In

Bottom mount

FC 25 B
FCC 25 A

HOW TO ORDER

INSTALLATION GUIDELINE