

Bracket  
Material :  
St 52

Lifting Pin  
Material :  
CK45

Locating Pin:  
Material:  
16MnCr5

**WARNING !**  
For safety reasons, the weight of the tool has to be supported by just two lifting pins.

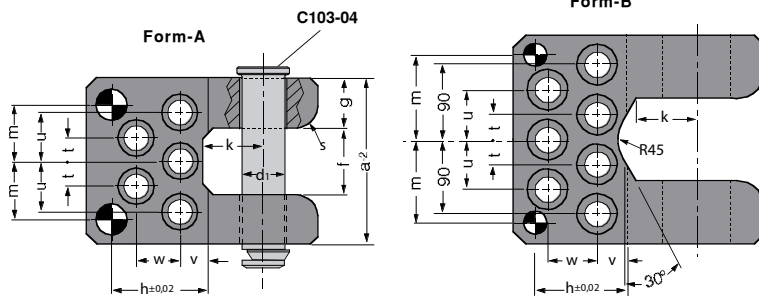
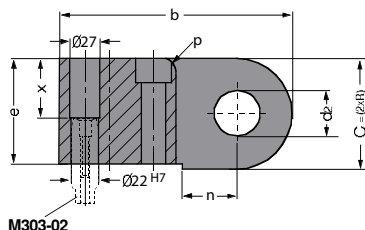
**Respect the max load**

**UYARI !**  
Güvenlik nedeniyle kalıp ağırlığının iki adet taflıma piminin taşıyabileceği maksimum yük miktarını aşmamalıdır.

**Maksimum yükü göz ardı etmeyiniz**

**ACHTUNG !**  
Aus Sicherheitsgründen achten Sie immer dass zwei Tragbolzen das gesamte Werkzeugs gewicht tragen müssen.

**Maximale Nutzlast beachten**



**GSB CODE:**C105-03

Code	Max. Load (Kg)	Max. Die Weight (Kg)	Form	d <sub>1</sub>	d <sub>2</sub>	a	b	c	e	f	g
C105-03-06400	3200	6400	A	30	32	126	185	80	75	50	38
C105-03-10000	5000	10000	A	40	42	150	210	100	95	60	45
C105-03-16000	8000	16000	A	50	52	175	240	120	115	75	50
C105-03-25000	12500	25000	A	60	62	200	300	140	130	80	60
C105-03-36000	18000	36000	B	80	82	250	300	160	150	100	75

	h	k	m	n	p	s	t	u	v	w	x	Civata
C105-03-06400	85	50	45	40	12	16	20	40	30	35	40	M16x 80
C105-03-10000	87	55	52	50	12	20	22,5	45	25	40	60	M20x100
C105-03-16000	95	70	62,5	60	16	24	25	50	35	45	80	M24x120
C105-03-25000	145	80	77,5	65	20	30	35	65	60	65	95	M36x160
C105-03-36000	105	95	100	90	20	30	30	60	30	60	115	M30x160