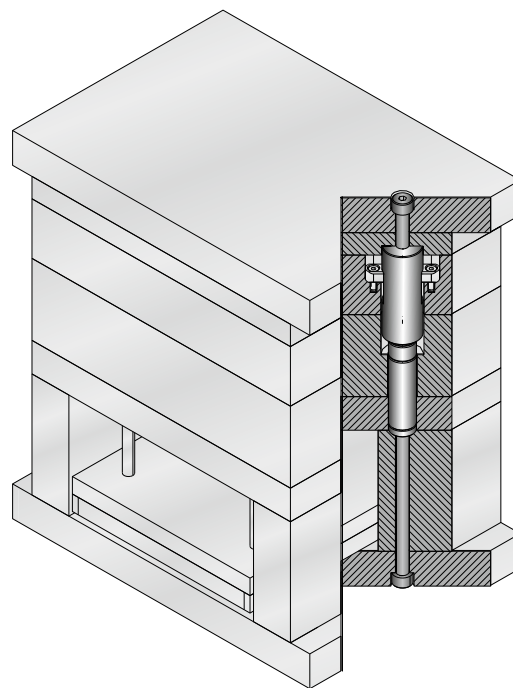
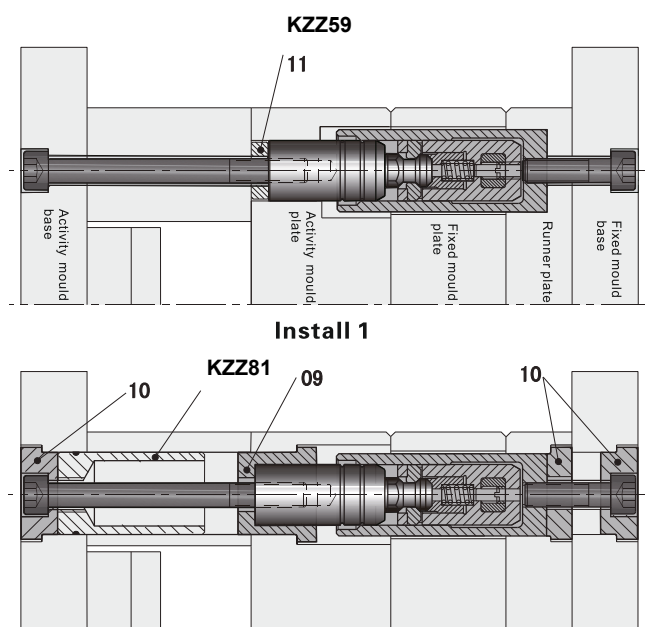




Latch locks

Installation Diagram:



Install 2

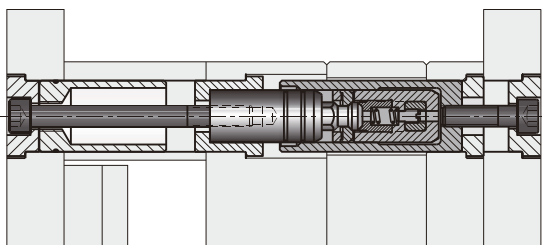
Installation Guidelines

- Installed stroke block, Use cup head screw make stroke block vertical with joint face fixed mould plate. Need accurate calculate first opening mould stroke.
- Installed body, Use cup head screw make body vertical with joint face fixed runner plate, request same concentric plunger.
- Install bar, stroke block and body symmetrical install on the mould, make sure right install and normal running, then fixed bar.
- Latch lock is precision device, please rely on real object to fixed position and symmetry install, if no symmetrical install or different stroke will cause single set latch lock stress, lead to latch lock break due to imbalance force.
- Every mould suggest to installed 2sets or 4sets.
- Coordinate function test, check these parts of latch lock structure whether smoothly and stroke coincide or not.
- Precision parts, please don't use it with other auto-processing parts. thus make some abnormal your company self responsible.
- First remove latch lock device to follow-up operation if need maintenance and change.

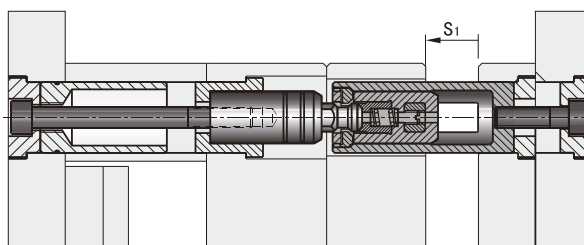


Latch locks

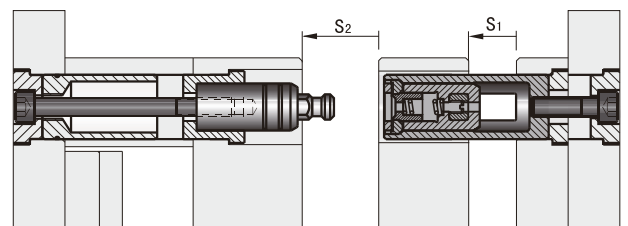
Functional chart:



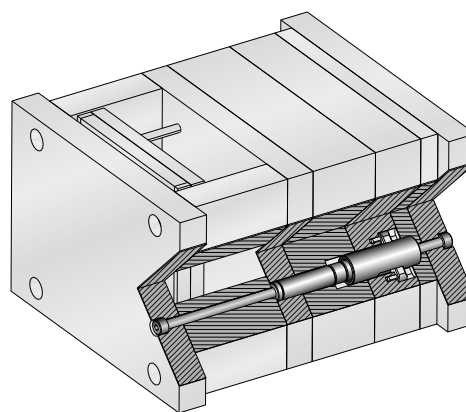
Mold closed



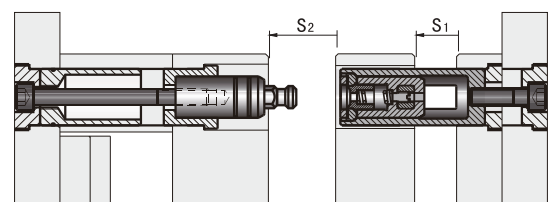
First finish opening mold



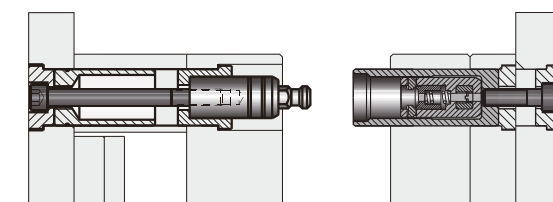
Second opening mould

**Warning:**

As below drawing show, when insert bar release plunger (second time opening mould start to open or completely open. must be sure first opening mould stroke in opening condition, otherwise will cause insert bar can't insert into and break latch lock mechanism during closed mould.



B Right ✓



C Wrong ✗