

## MP 2000

### ACTIVE SAFETY



OSAS



USAS



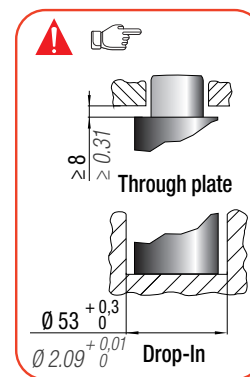
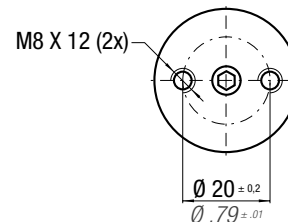
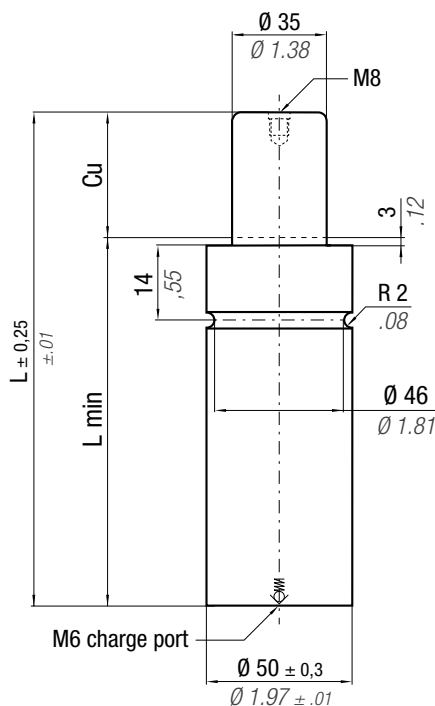
OPAS

\*  $F_{1i} =$

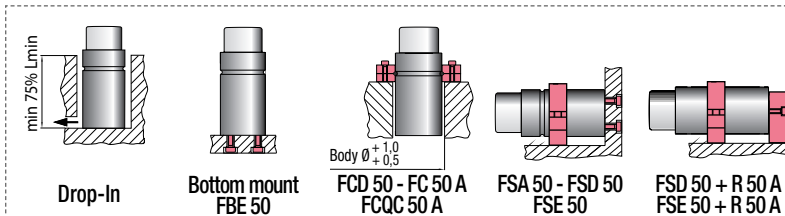
Isothermal end force at 100% Cu

\*\*  $F_{1p} =$

Polytropic end force at 100% Cu



CODE	Cu	L	L min	F0 Initial force daN lb	F1i *		F1p **		Vo		Maintenance kit		
					End force * daN lb	End force ** daN lb	cm³ in³	~Kg ~lb	39BMMP02000A				
MP 2000 - 010 - A	10	90	80	2000 ± 5% 209 bar 3031 psi  + 20 °C +68 °F	2634	5921	2902	6524	52,4	3,20	0,76	1,68	✓
MP 2000 - 015 - A	15	115	100		2617	5883	2880	6474	80,4	4,90	0,89	1,96	✓
MP 2000 - 020 - A	20	125	105		2775	6238	3088	6942	89,6	5,47	0,93	2,05	✓
MP 2000 - 025 - A	25	135	110		2916	6555	3276	7365	98,7	6,02	0,98	2,16	✓
MP 2000 - 032 - A	32	150	118		3074	6911	3487	7839	112,8	6,88	1,04	2,29	✓
MP 2000 - 038 - A	38	165	127		3153	7088	3593	8077	127,5	7,78	1,11	2,45	✓
MP 2000 - 045 - A	45	180	135		3269	7349	3751	8433	141,6	8,64	1,18	2,60	✓
MP 2000 - 050 - A	50	190	140		3355	7542	3868	8696	150,7	9,19	1,22	2,69	✓
MP 2000 - 056 - A	56	205	149		3398	7639	3926	8826	165,5	10,10	1,29	2,84	✓
MP 2000 - 063 - A	63	220	157		3480	7823	4039	9080	179,5	10,95	1,36	3,00	✓
MP 2000 - 080 - A	80	255	175	3668	8246	4299	9665	211,9	12,93	1,51	3,33	✓	



### HOW TO ORDER



### INSTALLATION GUIDELINE

