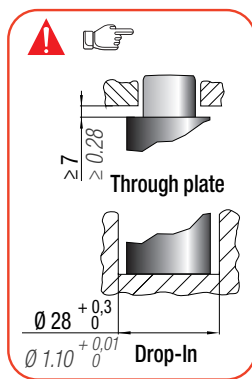
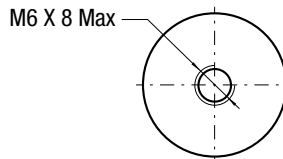
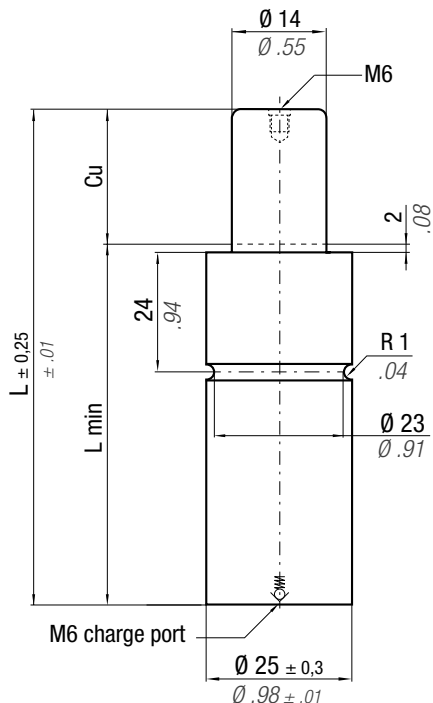




## MP 300



\*  $F_{1i}$  =  
Isothermal  
end force  
at 100% Cu



p. 16



\*\*  $F_{1p}$  =  
Polytrophic  
end force  
at 100% Cu

**ACTIVE SAFETY**

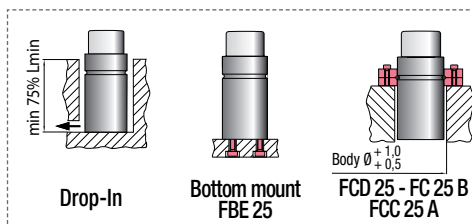


OSAS



USAS

CODE	Cu	L	L min	F <sub>0</sub> Initial force	* F <sub>1i</sub>		** F <sub>1p</sub>		V <sub>0</sub>		Maintenance kit		
					daN	lb	daN	lb	cm <sup>3</sup>	in <sup>3</sup>	~Kg	~lb	Disposable
MP 300 - 010 - A	10	75	65	300 ± 5% 674 191 bar 2770 psi + 20 °C +68 °F	430	966	481	1082	6,4	0,39	0,17	0,37	✓
MP 300 - 015 - A	15	85	70		466	1047	531	1193	8,2	0,50	0,18	0,40	✓
MP 300 - 020 - A	20	95	75		492	1107	568	1277	9,8	0,60	0,20	0,44	✓
MP 300 - 025 - A	25	105	80		513	1153	597	1342	11,5	0,70	0,21	0,46	✓
MP 300 - 032 - A	32	120	88		527	1185	617	1387	14,1	0,86	0,23	0,51	✓
MP 300 - 038 - A	38	135	97		522	1173	610	1371	17,0	1,04	0,25	0,55	✓
MP 300 - 045 - A	45	150	105		531	1194	623	1400	19,6	1,20	0,27	0,60	✓
MP 300 - 050 - A	50	160	110		540	1214	636	1429	21,3	1,30	0,28	0,62	✓
MP 300 - 056 - A	56	175	119		535	1202	628	1412	24,1	1,47	0,30	0,66	✓
MP 300 - 063 - A	63	190	127		540	1215	636	1430	26,7	1,63	0,32	0,71	✓
MP 300 - 080 - A	80	225	145	556	1250	658	1480	32,7	1,99	0,36	0,79	✓	



**HOW TO ORDER**

p. 183

**INSTALLATION GUIDELINE**

