

MS 90

Il nuovo codice sarà fornito solo ad esaurimento del vecchio - The new code will be supplied only when the old will be out of stock - Der neue Kode wird nur angegeben, wenn der alte nicht mehr lieferbar ist - Le nouveau code sera fourni uniquement lorsque le vieux stock sera écoulé - El nuevo código será suministrado sólo cuando se agoten las existencias del antiguo - O novo código irá ser fornecido apenas quando o antigo esgotar stock

ACTIVE SAFETY



SKUDO

* $F_{1i} =$

Isothermal end force at 100% Cu

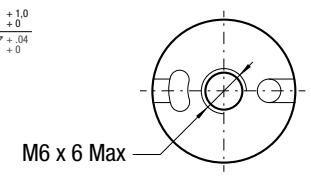
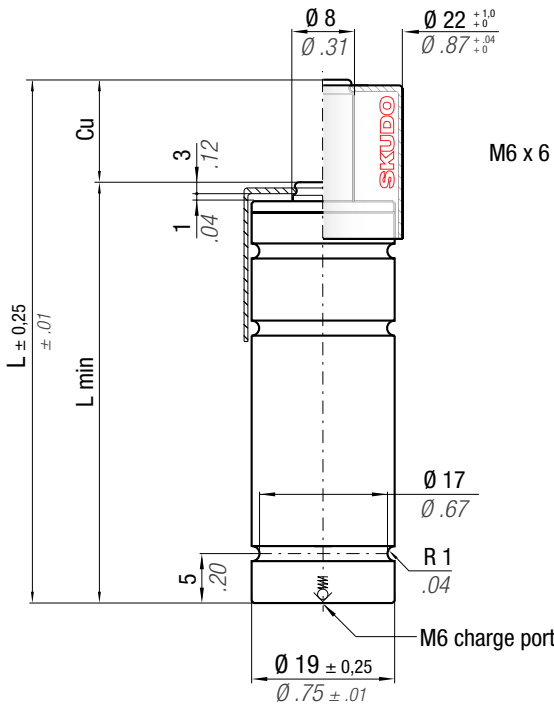
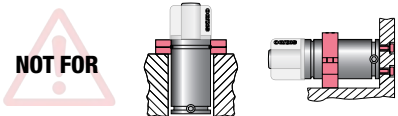


p. 16

** $F_{1p} =$

Polytropic end force at 100% Cu

Force color code	P		F ₀ Initial force ± 5% at +20°C +68°F	
	bar	psi	daN	lb
OR	10	145	5	11
PR	20	290	10	22
GR	60	870	30	67
BU	100	1450	50	112
RD	140	2030	70	157
YW	180	2610	90	202
BK	10-180	145-2610	5-90	11-202



N ₂	0 - 80 °C 32 - 176 °F	ΔP ± 0,33 %/°C	P max 180 bar 2610 psi	P min 10 bar 145 psi	S 0,50 cm ² 0,078 in ²	SPM ~ 100 - 150 (at 20°C)	Max Speed 1,8 m/s 70,8 in/s	Maintenance kit Disposable
----------------	--------------------------	---------------------------	-------------------------------------	-----------------------------------	---	--	--	--------------------------------------

CODE PHASING OUT from 05/2019	NEW	Cu		L		L min		F _{1i} * End force *		F _{1p} ** End force **		V ₀		PED 2014/68/EU		
		mm	inch	mm	inch	mm	inch	daN	lb	daN	lb	cm ³	in ³		~Kg	~lb
MS90 - 007 - A - ...	MS90 - 007 - B - ...	7	0.28	62	2.44	55	2.17	1.19 x F ₀		1.35 x F ₀		2,6	0.16	0,07	0.15	✓
MS90 - 010 - A - ...	MS90 - 010 - B - ...	9,7	0.38	67,4	2.65	57,7	2.27	1.22 x F ₀		1.40 x F ₀		3,1	0.19	0,08	0.18	✓
MS90 - 012 - A - ...	MS90 - 012 - B - ...	12	0.47	72	2.83	60	2.36	1.24 x F ₀		1.44 x F ₀		3,5	0.21	0,08	0.18	✓
MS90 - 022 - A - ...	MS90 - 022 - B - ...	22	0.87	92	3.62	70	2.76	1.30 x F ₀		1.52 x F ₀		5,5	0.34	0,09	0.20	✓
MS90 - 035 - A - ...	MS90 - 035 - B - ...	35,1	1.38	118,2	4.65	83,1	3.27	1.33 x F ₀		1.57 x F ₀		8,1	0.49	0,11	0.24	✓
MS90 - 047 - A - ...	MS90 - 047 - B - ...	47	1.85	142	5.59	95	3.74	1.34 x F ₀		1.60 x F ₀		10,4	0.63	0,12	0.26	✓
MS90 - 060 - A - ...	MS90 - 060 - B - ...	60,5	2.38	172	6.77	111,5	4.39	1.35 x F ₀		1.61 x F ₀		13,4	0.82	0,14	0.31	✓
MS90 - 077 - A - ...	MS90 - 077 - B - ...	77	3.03	205	8.07	128	5.04	1.36 x F ₀		1.62 x F ₀		16,6	1.01	0,15	0.33	✓
MS90 - 097 - A - ...	MS90 - 097 - B - ...	97	3.82	245	9.65	148	5.83	1.37 x F ₀		1.64 x F ₀		20,6	1.26	0,17	0.37	✓
MS90 - 122 - A - ...	MS90 - 122 - B - ...	122	4.80	295	11.61	173	6.81	1.37 x F ₀		1.65 x F ₀		25,5	1.56	0,20	0.44	✓

WARNING REMOVE SKUDO

Upside down mounting

Drop-In

FC 19 B
FCC 19 A

Bottom mount

HOW TO ORDER

INSTALLATION GUIDELINE